



002

Bi-Monthly  
**NEWSLETTER**  
by



# MALAYSIAN MODELLER

REVIEW: 65 MILLION YEARS KIT



## BIPLANE INVASION

**Strike Trainer HAWK**



**Whistling Death Corsair**

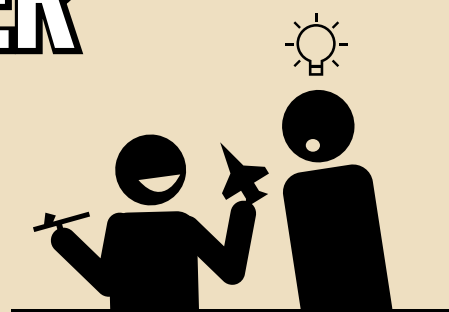
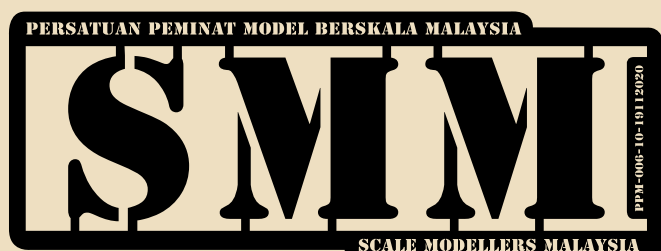


**Italian ZARA Class Cruiser**





# JOM! JADI MEMBER



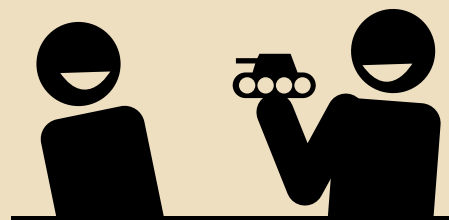
## BELAJAR

Pelbagai bengkel dan tips penghasilan model skala bertaraf dunia khas untuk ahli secara percuma.



## BERJIMAT

Menikmati lebih banyak diskaun eksklusif dari kedai-kedai hobi yang terpilih berdekatan anda.



## BERSANTAI

Jemputan eksklusif ke sesi sembang menyembang, groupbuild, pertandingan dan juga pameran di mana model anda akan menjadi tumpuan pengunjung dan rakan modeller.

Muat turun BORANG PENDAFTARAN

➡ [https://drive.google.com/file/d/1h4\\_JzacBqZKfIWv3o1gWGq6FeCmcCFpa/view](https://drive.google.com/file/d/1h4_JzacBqZKfIWv3o1gWGq6FeCmcCFpa/view)

Layari Facebook Kami

➡ <https://www.facebook.com/scalemodellersmalaysia>

Scale Modellers Malaysia  
Persatuan Peminat Model Berskala Malaysia  
No : PPM-006-10-19112020

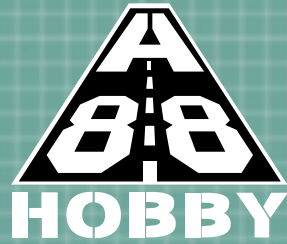


# Scale Modellers Malaysia AFFILIATES



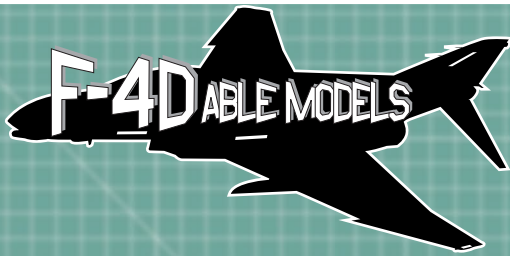
**CKTAN PLAMODEL STORE**

<https://www.facebook.com/cktanplamodelshop>



**AREA 88 HOBBY**

<https://www.facebook.com/Area88Hobby>



**F-4DABLE MODELS**

<https://www.facebook.com/f4dablemodels>



**AKINA HOBBY SHOP**

<https://www.facebook.com/akinahobbyshop>

## Scale Modellers Malaysia SUPPORTERS

**Infinite Creation Workshop**

<https://www.facebook.com/infinitecreationworkshop>

**Pla+ Studio**

<https://www.facebook.com/plaplusstudio>

**The Hobby Store Malaysia**

<https://www.facebook.com/TheHobbyStoreMY>

**World Hobby Miniatures**

<https://www.facebook.com/whminiatures>

**The Little Hobby Shop**

<https://www.facebook.com/thelittlehobbyshop>

**Hobby Scale Miniatures**

<https://www.facebook.com/HobbyScaleMiniatures>

**Plamolpoh Kit**

<https://www.facebook.com/plamoipoh.kit>

**Decal-la**

<https://www.facebook.com/profile.php?id=100068809191781>

### SMM Editorial team

Jason Cheah  
Suresh Abraham  
C K Loo  
Aidy Abdullah  
Lucas Gan  
Adrian Teo  
Koo Williams



## KIT REVIEW

Attractive boxart  
packaging in this  
new series kit and  
figurine set

# HISTORICAL COSTUME GIRL "AOI"

FINEMOLDS 1/35 COSTUME GIRL "AOI"  
WITH 1/72 ZERO FIGHTER MODEL 22

**F**ineMolds continues their line of good looking 1/72 scale planes with this re-release of their 2007 kit bundled with the ModelGraphix magazines released in Japan. The original kit came in two parts of the magazine and with this 2021 release, an additional 1/35 figurine was added to the box.



The popularity of 1/72 kits in Japan is well documented, given the limited space in individual homes and apartments to actually display kits. Despite the smaller scale, FineMolds have kept up with the race to produce very detailed kits and this is no exception.

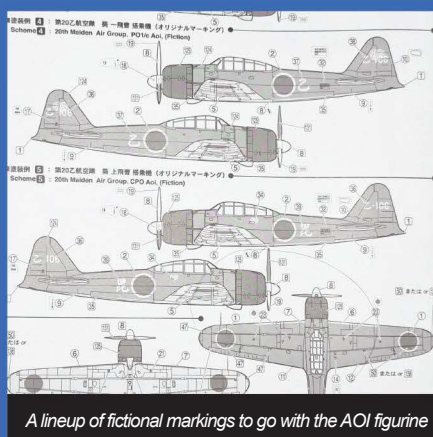
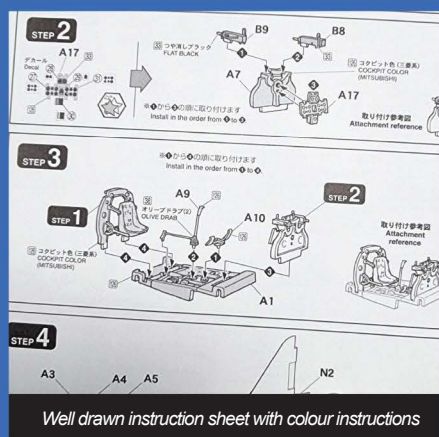
Spread over 12 sprue press, this kit has more than 100 parts to make a very detailed model of the Model 22 Zero fighter with markings for historical 1943 planes as well as fictional markings to display the kit with the anime like AOI figure in 1/35.

Details are so well thought out that even the surface quality between metal sheets and fabric flaps are represented in the way the skin is replicated. The cockpit assembly is shown over six steps and complete with the exception of the seatbelts. These are aftermarket parts also produced by FineMolds and are sold separately. The radial engine is also well detailed and parts are free from flash and injector sink marks.

A quick dry fitting of the fuselage halves and the wings came out perfect with no misalignment on the panel lines. The only concern is that the connector tabs are rather clunky and a bit of work is needed to sand flush these areas.

The figurine is injection molded in white and well animated, detailed and articulated. It should look really good with a coat of paint. Decals are provided for the eyes for a quick fix.

Overall, this is a very impressive kit and given the amount of detail, the price is a bit higher than the usual 1/72 kit but well worth the love that went into its production. Highly recommended and can be bought from F-4dableDirect who is a registered distributor in Malaysia.



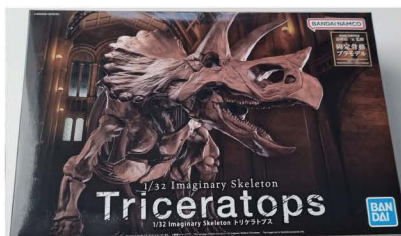
1/35 Costume girl AOI with  
1/72 ZERO Fighter Model 22  
Brand : FineMolds  
Kit No : FNMHC7



# BANDAI 1/32 IMAGINARY SKELETON

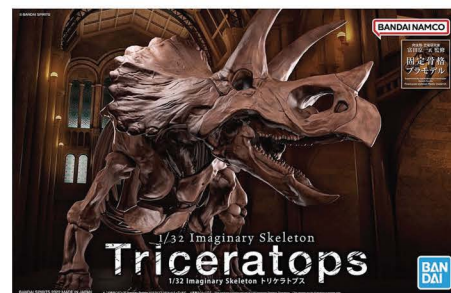
# TRICERATOPS

This Bandai kit was the second Imaginary Skeleton series kit by Bandai first released in mid 2021. Planned as a series of museum feel kits, the Triceratops kit comes bundled not only as a kit but also with enough information in the kit manuals to make the joy of building more encompassing and complete.



The box art as a total package is very attractive, making use of the CAD 3D files to give you a good representation of what the kit has to offer. This kit will build to a length of 230mm which is ideal for a cabinet or table top display, and if you opt to get the Tyrannosaurus model as well to display in a joint setting, the entire model comes to life as suggested in the box art.

In the box, you will find five sprue sets labeled A to E in separately sealed bags to avoid scratches. As Bandai has a fantastic reputation of producing kits that do not need adhesive to put together, the trend is followed here. Personally, I would add a bit of glue to make sure the parts are well attached but this is a personal preference.



A look at the kit parts find them similar to the quality in their popular Gundam series. The plastic is firm and carries the very well done details of the CAD sculpt onto the sprues quite superbly without flaws, flash or pin marks. Molded in a deep brown tone with a slight sheen, this kit could also be good without painting, as the design of the joints are very cleverly hidden and formatted. Displayed with a bonus base, this will build into a beauty. Do spend time to look at the instructions carefully as there are a lot of cautions, recommendations and information for the modeler to make this a masterpiece.

HIGHLY recommended and can be found in good model shops around KL while there is still stock.



The instruction sheet steps are straightforward and designed with the very young in mind as this kit is not recommended to those under three years old only. Graphics are nice, well represented and the instruction steps sequence is logical. The attention to detail and realism is never compromised and these are emphasized throughout the booklet giving us a 'beginner guide to paleontology' feel. Parts are well labeled and the instructions even provide a step by step guide on how to paint the kit realistically.

A separate booklet is provided in both Japanese and English just like the instruction sheet and it gives a fantastic encyclopedic feel for the modeler to know in depth about the Triceratops. Well worth the price of the kit for this bonus booklet.



Reviewed by C K Loo





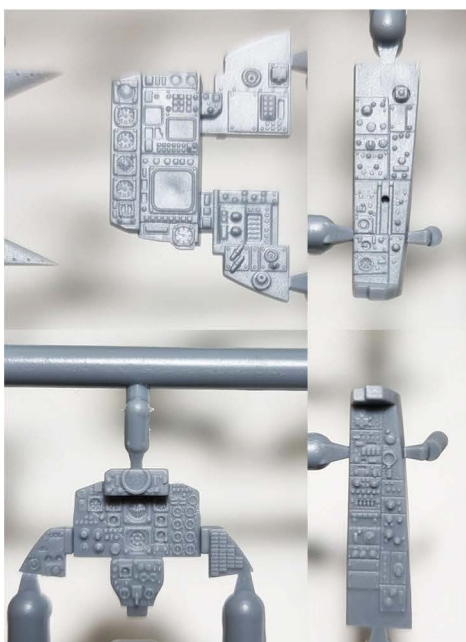
ZOUKEI MURA  
1/48 SWS no.14

# F-4G PHANTOM II WILD WEASEL V

It was a matter of time before Zoukei-Mura released an F-4G version of the Phantom II and did they do it in style to complete their excellent detailed family of Rhinos. The G was essentially an evolution of the E but in the Wild Weasel (Air to ground air defense suppression) role, hence with a number of subtle alterations made to the avionics, fuselage details and weapons payload as well as the customary instrument panels layout.

While mostly ignored by other kit manufacturers, Zoukei-Mura went to town with this kit with dedicated sprue trees made specifically for the G, namely sprue tree A for the fuselage (which still bore the label as an F-4E but definitely retooled as a G), sprue J (cockpit and payload) and sprue H for the underbelly and tail parts to capture all these important alterations.

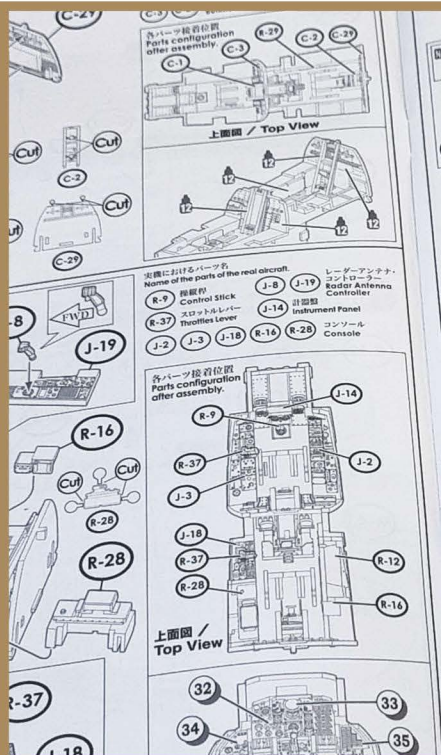
The details in the kit are perhaps more complete and accurate than any of the other brands around which justifies their more costly price. Since their first kit release, ZM continues their tradition of producing excellent instruction sheets with tons of information including the actual plane specifications, historical write up sequentially labeled subassemblies and so forth, making it good bedtime reading as well. The step by step build sequence is well laid out with ample diagrams showing you how the subassemblies will look like once completed, down to cautionary notes on what not to do and to take care. The 32 page booklet is topped up with a part list and detailed colour chart in Vallejo or Mr Color codes. ZM is probably the only kit maker which shades the part where you ought to apply adhesive on the plastic parts.



Other highlights include a poseable engine on a mount, pilot ladders, a good set of payloads, open or single piece closed canopy, finely printed Cartograf decals with ample stencils, a beautiful coloured decal and paint guide and an absolutely gorgeous box artwork.

As this is a product made under license from Boeing, the quality and accuracy is bar none and comes highly recommended for modellers with a bit of experience or those wanting to have a really good time with a fantastic kit.

Reviewed by C K Loo





# Whistling Death!

by K. Fara



## A FUN BUILD WITH A COLOUR CHALLENGE

**M**y latest addition to the display shelf was a fun build straight out of the box with no aftermarket parts and known as "Whistling Death", an A4 U Corsair from VMF-214 Black Sheep Squadron onboard the USS Franklin.

This is an OOB except for some minor additional details and ordnance which includes Mk.54 depth charges and 500 lb bombs both from Accurate Miniature 1/48 TBF. It was painted using Tamiya acrylics. I've seen many battered up and fully weathered Corsairs but I built mine as pristine as possible with minor and subtle weathering effects.

### Polishing the Skin

It was a straight forward out of the box build with the kit being superbly detailed, having no major problems with the fitting and no putty required except for sanding in some areas.

The cockpit received a yellow green overall while the instrument panels were painted flat black with multi-coloured switches and buttons. Some oil wash and dry brushing was done to highlight the details. Tamiya provided decals for the instruments gauge which fitted and adhered nicely using a layer of Mr. Softener. The cockpit detail is crisp, a typical Tamiya standard for all their new release kits.

I was somehow not convinced with the striking white bezels on the decal sheet being too outstanding for me. It would have been more realistic if the bezel details were highlighted by light dry brushing with silver.



The main fuselage construction was pretty straight forward with no aftermarket parts involved while the fit was superb. There were no major gaps or problems except for some light sanding in parts to hide some joint lines.



Vought F4U-1D Corsair  
Brand : Tamiya (61085)  
Scale : 1/48





## Painting

The tricky part was to achieve the actual paint scheme of the Corsair by using various types of blue which included deep and dark sea blue, dark blue green and glossy sea blue.

Tamiya has come out with some "special paints" with new designated colours which for the Corsair was designated AS-8 "navy blue" (US Navy Blue). Unfortunately, it comes in a spray can costing about RM40. Not cheap!



Instead, I began experimenting colour schemes by mixing tones of blue I had on the paint rack. I began with XF-17 (sea blue) as the main base colour mixed with XF-50 (field blue) a few drops of XF-63 (German grey) and sprayed to a test subject. Some tweaking and a few drops of X-22 (clear) to reduce the flatness resulted in a deep flat bluish grey which still was not ideal.



I then added XF-8 flat blue to achieve a more bluish tone and airbrushed an irregular pattern on the fuselage. Still looking dull with a deep sea blue tone, I decided to create a glossy effect by spraying some layers of X-23 (Clear blue) till the desired colour finish was achieved.



Photo on the right is the result of the clear blue effect. I directed the spray to some panel lines to give some tone and shades. The engine cowling didn't get the clear blue effect. Unfortunately the surface had a more gritty rather than smooth glossy finish.

## Polishing the Skin

With the gritty and coarse finish on the fuselage skin, I almost put back the kit for another time but my efforts finally paid off as the polishing compounds finally smoothened the surface and the gloss effect on the paint eventually began to show. Polishing with "TheTreatment" model wax (a petroleum base) brings life to the paint. Having never polished an aircraft model before the result was brilliant.

## Finishing touch

Not wanting to weather the aircraft heavily and ruin the glossy finish, I used a silver metallic paint pen and lightly dry brushed certain areas for some wear and tear. A 2B pencil lead was used on flat finish and the HVAR under the wings received some fuse wire for detailing. The engine received some oil wash and the exhaust stain was airbrushed using XF-52. Although it took me years to complete this kit, I have to say it was a purely satisfactory process throughout.





# SHIP AHoy!

Venturing into the unknown  
with my first ship build

by K Y Wong



**H**aving built tanks, aircraft and gundams and liking variety, I decided to venture into the world of miniature ships.

The first ship I have which is still in my stash is a 1/700 IJN Unryu, an aircraft carrier. However my first build, is a newly tooled kit from Trumpeter, the 1/350 RN Fiume. It is an Italian Zara class heavy cruiser, about 600ft long, with a top speed of approximately 33 knots. It has a crew of 841 and is armed with 8 x 8in 53 cal guns, 16 x 4in 47 cal guns, 6 x "pom pom" guns and 8 x 13.2mm machine guns.

It saw action mainly in the waters off North Africa, together with its sister ship Gorizia. In the Battle of Cape Matapan, the Fiume was sunk while trying to protect the battleship Vittorio Veneto.

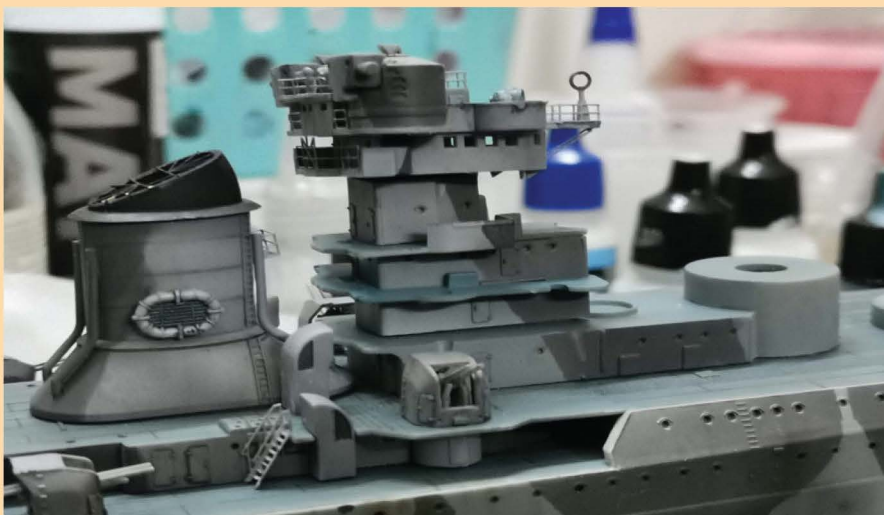
Some people may think ships are unattractive with its plain gray look. However, if you explore further, you will be surprised that some ships have camouflage paint. I was attracted to the Fiume's camouflage scheme with its green lower hull and red and white stripes bow.

I started with painting the hull, and weathered it lightly. Small parts like the guns were painted on the sprue. It is easier this way because you have many small parts, and cutting them out first and then only paint may risk losing it to the carpet monster.

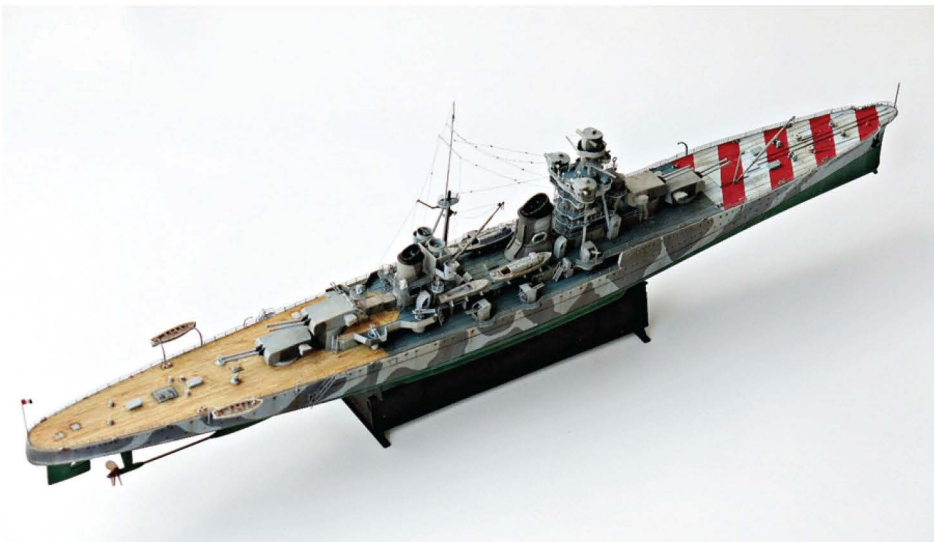
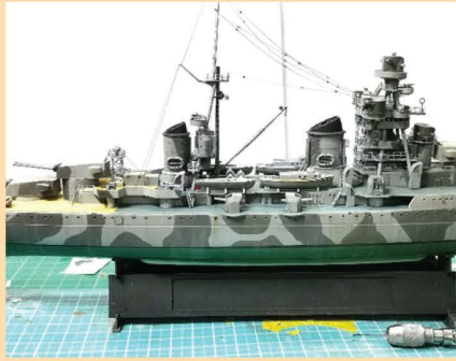


Fitting is excellent. In this picture, I had already painted the funnel. It is very much like building lego blocks; you just need to stack them up one by one. I also painted the superstructures separately.

The superstructure is painted level by level, and then glued in place. The rails and ladders are photoetched parts, which I sprayed with rattle can paint. The paint on the PE came off easily especially if I needed to bend the PE into complex shapes. I used quick dry super glue to stick the PE in place. (I discovered White Glue is a better and cleaner option).







And there you go, my first ship! Initially, I was reluctant to venture into this genre, because of the rigging and PEs. However, as it turned out, it is not that scary after all. Surprisingly, the rigging was the easiest part, and in my second ship build, I discovered that the railings can be easily glued in place with White Glue. Less messy, and no glue residue. You will be surprised it dries quite fast and the strength of the bond is very good. I went on a shopping spree and added more than a dozen more ships in my stash!



**Italian Heavy Cruiser Fiume**  
 Brand : Trumpeter (05348)  
 Scale : 1/350



Star Wars Episode 6: Return of the Jedi is the third installment of the Star Wars original trilogy which was released in 1983.

I built this diorama depicting scene 47 from the film Return of the Jedi where Lando Calrissian, Nien Numb and an unidentified character are in the Millennium Falcon for the Death Star attack run. This is the scene after the Millennium Falcon, together with an X-Wing (piloted by Wedge Antilles) did a torpedo run to the Star Destroyer's core reactor which obliterates it.

### The Millenium Falcon

I used Bandai's 1/350 Millennium Falcon model kit which is about the size of the palm of an adult's hand for the diorama. With less than 25 parts to complete the build it was very straight forward with only minor clean-ups needed. Once assembled, I had to roughly cut off its radar dish leaving only its base since the dish was knocked out when going through a tight space while heading towards the reactor core. Once done, the model was ready to be painted. While the whole model was painted light grey, some panels were hand painted with a mix of grey and yellow to break the mono tone colour as well as some red following the movie. Finally blackwash and weathering was done to give a worn and tired look to the ship and the window panel was hand painted black before considering it completed. A 2mm thick plastic sheet was used as the holder/anchor for the Millennium Falcon which was left unpainted as it would not be visible once the diorama was completed.



## RETURN OF THE JEDI DEATH STAR DESTROYED

by Imran Zulkifli





## The Base

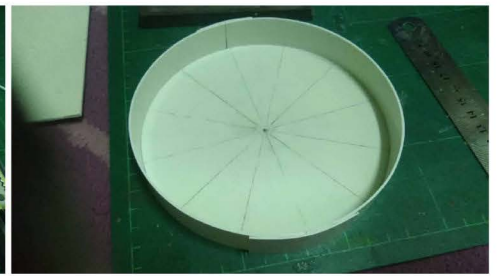
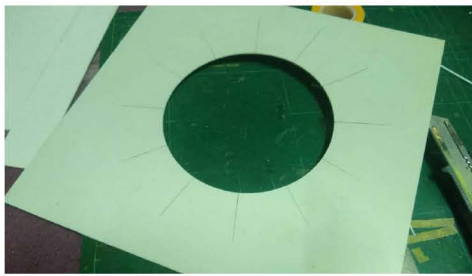
I began with the surface of the Death Star using a 1mm plastic sheet for the base, marking the location where the surface detail would be located and cut the opening where the Falcon blasts through by using a circular cutter.

The circle that was cut out would be the base for the Millennium Falcon to be anchored to with glue around the circle. A slot was also cut to locate the plastic that held the Millennium Falcon in place. Once completed, I started on the surface detail by building 12 structures using 2mm and 0.5mm square rods by Evergreen Plastics.

With the main base completed, I began building other surface details for the Death Star surface. I cut multiple 3cm squares for the section panel on the Death Star surface and added random details on it. These were just simple squares and greeblies whilst adding some structures on others. All the panels were then arranged onto the main diorama base which was then painted grey with some black pre-shading. The structures around the port were painted red as per the reference.

## Explosion Effect

The explosion was created by using chicken wire cut to size depending on the size of the explosion required. This was then tied to the base using wires and randomly shaping them to form the blast of the explosion. A LED light arrangement bought at Daiso was then used and arranged to ensure that the light of the "explosion" was balanced for the diorama. To create the explosion effect, I used synthetic cotton from an unused pillow and shaped it so that once the LED was turned on, the warm white light from the LED would give the desired effect for the diorama. For added impact, a few strands of fiber optic were attached directly to the LED so that light emitted from the LED would travel to the tip of the fiber optic strand giving the illusion of debris from the explosion which completed the diorama.





# STRIKE TRAINER

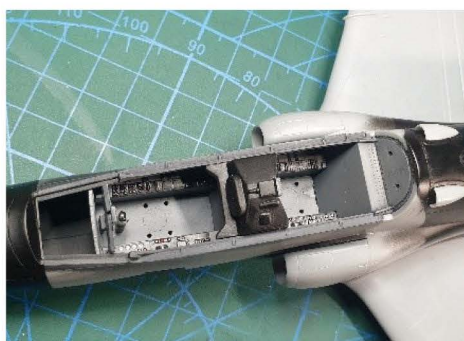
## RMAF Hawk 108

by Eric Mak



This is my first-time handling PE parts. I must say that it has been quite an experience! I used a combination of CA glue and Resin UV glue to hold parts in places.

The instrument panels are very nicely moulded with raised details. I don't usually file or shave away these raised details as it is perfect to use with the supplied kit decals. Mr Hobby Mark Softener were used to contour the decals into place after carefully positioning the decal to match the raised details. This method achieved some sort of 3D effect.



Cockpit side control panels were all hand painted with a mix of acrylic and lacquer paint and finished off with Tamiya Panel Line products for depth illusion. I also added cable details to the flight stick using a 0.5mm gauge wire.

The two halves of the fuselage were joined. Fit was good with minimal seam-lines requiring putty works. After sanding the putty smooth, a layer of Mr Surfacer 1500 Black was applied to check for any visible joints. Re-scribbling some details were needed.

Looking at reference photos, the Wing Fences were removed as this does not appear in the RMAF model. I have also scratch-built the wing tip formation light (rough work and out of shape mostly) as these were missing from the Hobby Boss kit. Thereafter I assembled the rest of the parts together... ready for the paint booth!

I first primed the kit using Mr Surfacer 1500 Black (premixed with Mr Hobby Levelling Thinner). Once dry, I sprayed a layer of MLT to smoothen the surface finishing of the Surfacer primer. After that, I employed the Black Basing Technique (some call it Marbling Technique) to the kit using a combination of Mr Color C01 and C308, carefully demarcating where I wanted the darker shades to be and not too uniform in the shading effect.





Diluting Mr Color C335 Medium Seagray to very thin and translucent (roughly 1 part paint to 8 parts thinner), I slowly built up and layered the color to the entire kit. There are no fast rules to this as everything was done eyeballing on the paint mixture and the final layer to each desired preference.



The aft and starboard navigational lights were moulded in clear plastic. Prior to painting, I used Mr Masking Sol R to cover the lighting part for later painting using clear red and green for top side and Mr Color Metallic 206 to the underside for a reflective effect.



Once all parts were painted and dried, it was time for the second most tedious task in kit building for me... Decaling.

I used a combination of decal sheets from the Hobby Boss Mk.208 kit I had saved up, Fishbone Inc Hawk Silver Jubilee decals and another unknown custom printed decal for tailfin insignia.



There were some overly glossy and thick decals notably the roundels which required using a 3000 fine grit sanding sponge to wet sand down the decals.



Once the decaling was done, I sealed the decals using Mr Color GX100 Super Clear III Gloss. This was only done to where the decals are at leaving the rest of the surface in its original paint finishing



The yellowish mid frame section of the canopy was airbrushed with heavily diluted Mr Color C48 Clear Yellow.

The fuselage bottom received the same wash and subtle stain effect with additional trailing oil stain using Mr Hobby Weathering Color WC03 Stain Brown.

Once all these were done and dried, a coat of Mr Color GX114 Super Smooth Clear Flat was applied to the overall kit.

And the final step... assembling the parts together!



# SENTIASA DI ANGKASA







**RMAF Bae Hawk Mk. 108**  
**Brand : Hobby Boss (81735)**  
with tail parts from 81737  
**Scale : 1/48**

## MODELLER'S SHOWCASE



**P**rolific modeller, Allan Chew brings us a trio of Bi-planes from the ICM brand in colourful 1/32 scale fashion. Released in 2020, these Stearman kits have established ICM as a reputable Bi-plane models manufacturer. In appropriate fashion, long established as an accomplished Bi-plane modeller while he also dabbles in modelling kits of other genres, these Fiat CR42 in Swedish and Italian markings as well as the USAAF Stearman clearly demonstrate the artwork and skill of Mr Chew in producing models of exceptional finish.





# BIPLANE INVASION

by Allan Chew



Straight out of the box with the exception of adding Silverwing aftermarket decals on the Swedish plane, the builds had enhancements like scratchbuilt turnbuckles and eyelets. The turnbuckles were simply appropriate sized brass hollow tubes cut to length and inserted with twisted copper wire to impart a visual replication of actual turnbuckles. Customary Eduard aftermarket seatbelts were added to make the cockpit visually complete.





One of the attractive aspects of bi-plane modelling will always be the vivid and brave colours and markings that adorn them. The paintwork for these models were exclusively in MrColor with the matching done purely on research and eyeballing. "The colours were all mixed until I was satisfied with the mixture tone. Most challenging was getting the right tonal colour in relation to the decal and the yellow numbers". "The riggings were lycra which made excellent scale and easy to work with." Topped off with a Tamiya dark wash, "these ICM kits were a real joy to do." according to Allan as" the kits felt very builder friendly and hardly will cause a drop of sweat ". In his own words too, these kits had "Low part count, almost no issue at all and rated highly!"





Many modellers shy away from Bi-plane modelling due to the fine work involved in riggings. Allan hopes that these builds will inspire more to open up a Bi-plane model kit and to give it a whirl, riggings and all. He occasionally hold demonstration clinics showing how easy riggings can be. We hope you are inspired.



**Stearman PT-17/N2s-3 Kaydet**  
**Brand : ICM (32050)**  
**Scale : 1/32**

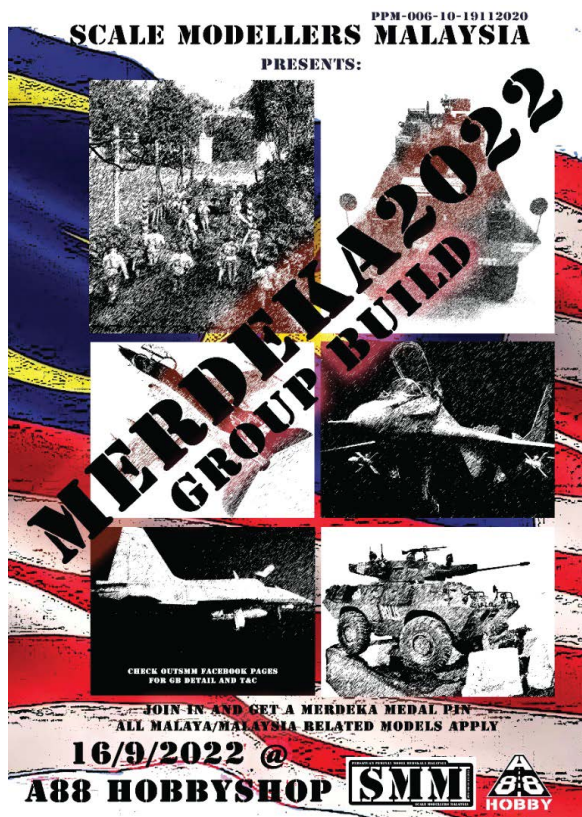




## EVENTS

# MERDEKA GROUP BUILD

16TH SEPTEMBER 2022, AREA 88 HOBBY









## EVENTS

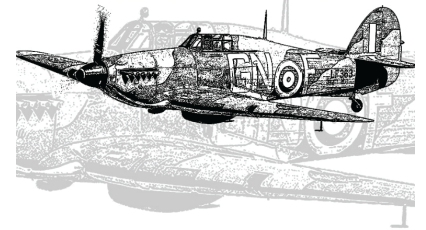
# HURRICANE HANGOUT SMM MODELWORLD MEET

19TH NOVEMBER 2022  
AREA 88 HOBBY



PPM-006-10-19112020  
SCALE MODELLERS MALAYSIA  
PRESENTS:

## HURRICANE a chat and meet gathering HANGOUT



bring a model of a  
HAWKER HURRICANE  
in progress or completed for  
a modeller gathering @  
AREA88 Hobby SHOP  
19 NOVEMBER 2022  
12-4pm

light refreshments will be served





# SMM MODELWORLD MEET 2022

12-5PM, 19/11/2022 @  
A88 HOBBYSHOP

AIRCRAFTS  
SHIPS  
AFVS  
MECHAS  
SCI-FI  
FIGURES  
DIORAMAS  
CARS  
etc...



Introducing "BRIAN PARAM AWARU"  
for favourite model display

WAP OVER EUROPE GROUP BUILD  
Special category and surprise  
gifts for entries sponsored by A88

Free entry for all SMM members.  
Bring in your models for display  
and show in SMM's annual  
modellers meet event. All models  
will be evaluated for eligibility of  
medal awards. Non members entry  
@ Rm10 per model.

